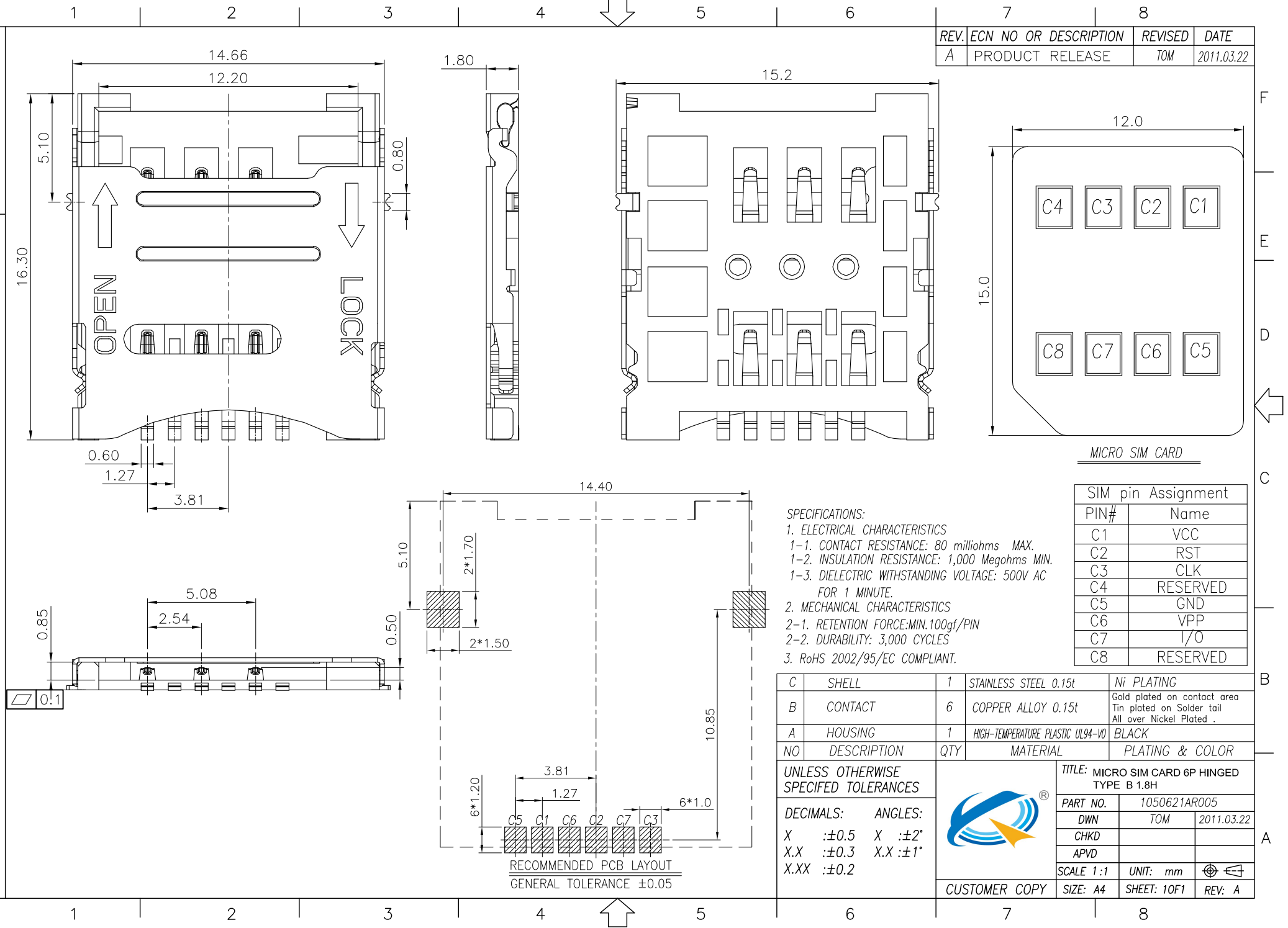


ROHS Compliant



REV.	ECN NO OR DESCRIPTION	REVISED	DATE
A	PRODUCT RELEASE	TOM	2011.03.22

**SPECIFICATIONS:**  
**1. ELECTRICAL CHARACTERISTICS**  
 1-1. CONTACT RESISTANCE: 80 milliohms MAX.  
 1-2. INSULATION RESISTANCE: 1,000 Megohms MIN.  
 1-3. DIELECTRIC WITHSTANDING VOLTAGE: 500V AC FOR 1 MINUTE.  
**2. MECHANICAL CHARACTERISTICS**  
 2-1. RETENTION FORCE: MIN. 100gf/PIN  
 2-2. DURABILITY: 3,000 CYCLES  
 3. RoHS 2002/95/EC COMPLIANT.

SIM pin Assignment	
PIN#	Name
C1	VCC
C2	RST
C3	CLK
C4	RESERVED
C5	GND
C6	VPP
C7	I/O
C8	RESERVED

NO	DESCRIPTION	QTY	MATERIAL	PLATING & COLOR
C	SHELL	1	STAINLESS STEEL 0.15t	Ni PLATING
B	CONTACT	6	COPPER ALLOY 0.15t	Gold plated on contact area Tin plated on Solder tail All over Nickel Plated
A	HOUSING	1	HIGH-TEMPERATURE PLASTIC UL94-V0	BLACK

UNLESS OTHERWISE SPECIFIED TOLERANCES

**DECIMALS:** ANGLES:  
 X :±0.5 X :±2°  
 X.X :±0.3 X.X :±1°  
 X.XX :±0.2



TITLE: MICRO SIM CARD 6P HINGED TYPE B 1.8H			
PART NO.	1050621AR005		
DWN	TOM	2011.03.22	
CHKD			
APVD			
SCALE 1:1	UNIT: mm		
CUSTOMER COPY	SIZE: A4	SHEET: 10F1	REV: A

RECOMMENDED PCB LAYOUT  
 GENERAL TOLERANCE ±0.05